

Overview

For the past eight years, Wallace Township has been part of the Brandywine Regional Police Department (BRPD). Between 2000 and 2007, the Wallace share of the BRPD budget grew by 179%. During the same period of time, all other township expenses grew by only 10% and Wallace's population only grew by about 6%.

Earlier this year, a group of concerned citizens formed an independent Police Study Group to review our present police arrangement and to compare our costs and coverage to other neighboring townships. Their report and recommendations are available for your review. The Police Study Group's report convinced the Board of Supervisors that to continue in the direction of the current police arrangement would place the Township in an untenable position financially.

The Board of Supervisors investigated various scenarios for police coverage available to the township. The options detailed in this report are Wallace Township forming it's own department with 24/7 coverage, Wallace Township forming it's own department with State Police coverage from 2am-6am and the option of full time State Police coverage.

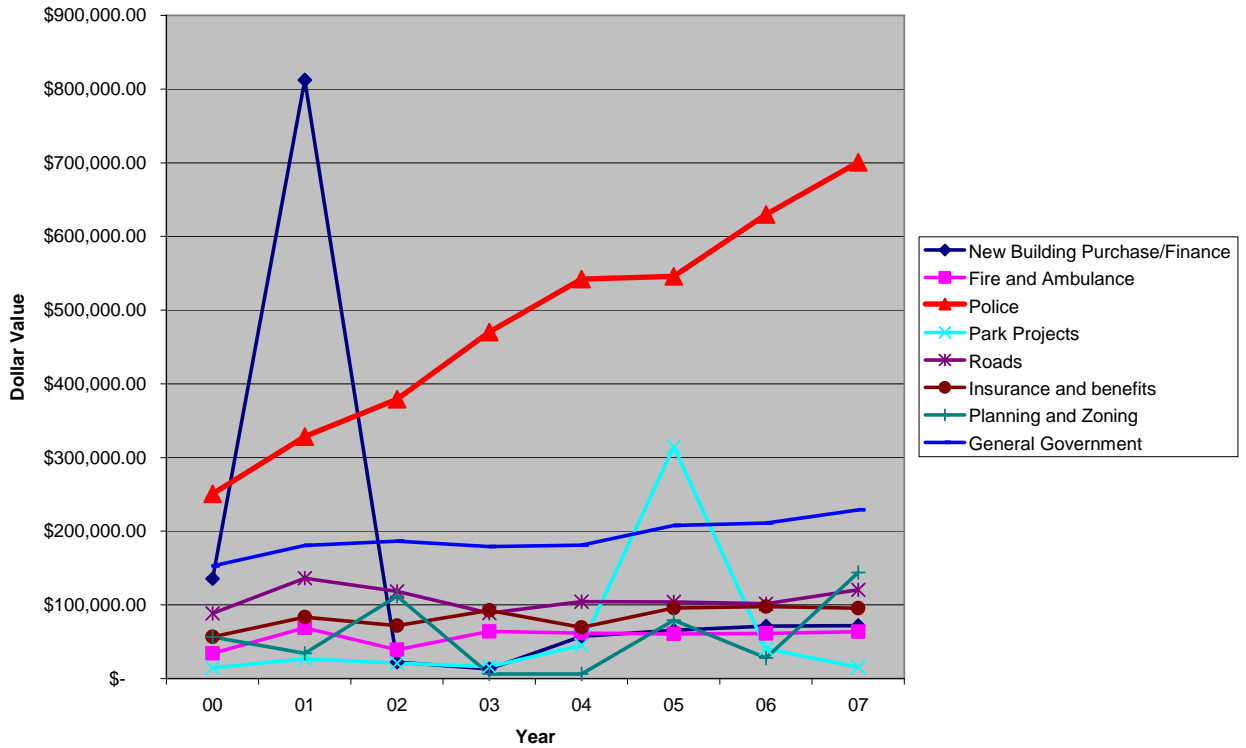
This packet contains various financial statistics related to police services and also forecasts the costs associated with the scenarios listed above. Also included are statistics about the volume of calls for service and the breakdowns of the calls for the year 2007. It is our hope that these charts and statistics will assist residents in understanding the current police situation and future options.

Tonight you will have the opportunity to talk with representatives of the PA State Police and the Supervisors. The Board urges you to ask questions. We also ask you to review carefully the information that follows.

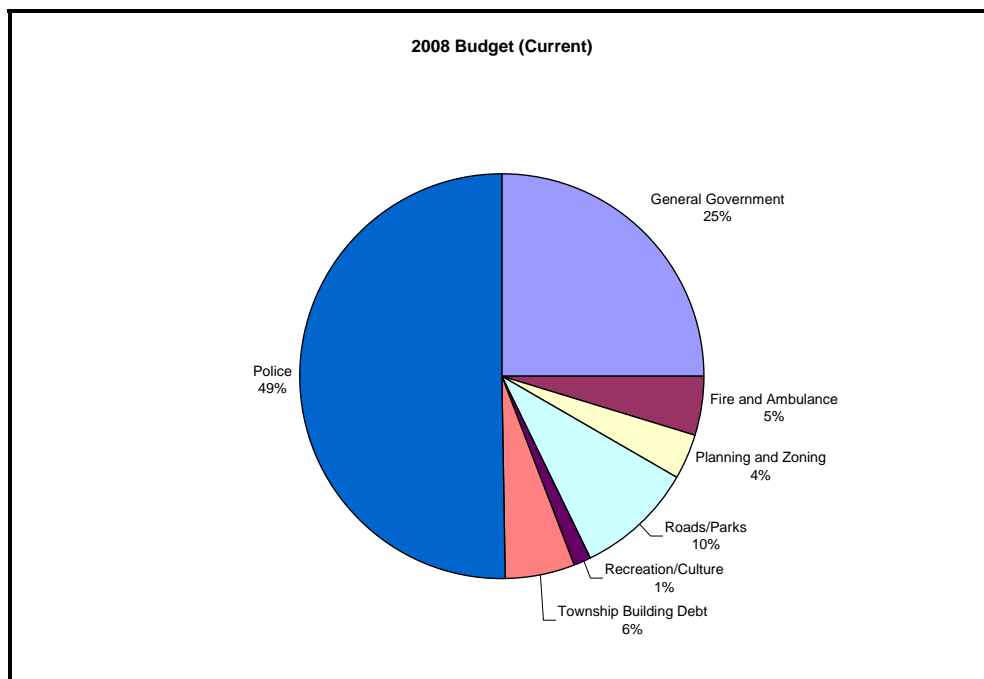
TOWNSHIP EXPENSES

Between 2000 and 2007, the Wallace share of the Brandywine Regional Police Department (BRPD) budget grew by 179%. During the same period of time, all other township expenses grew by only 10% and Wallace's population only grew by about 6%.

Wallace Township Expenses 2000-2007



WALLACE TOWNSHIP 2008 BUDGET



2008 CURRENT POLICE COSTS COMPARISON TO NEIGHBORING TOWNSHIPS

The chart below compares police expenditures per household of Wallace to those of neighboring townships.

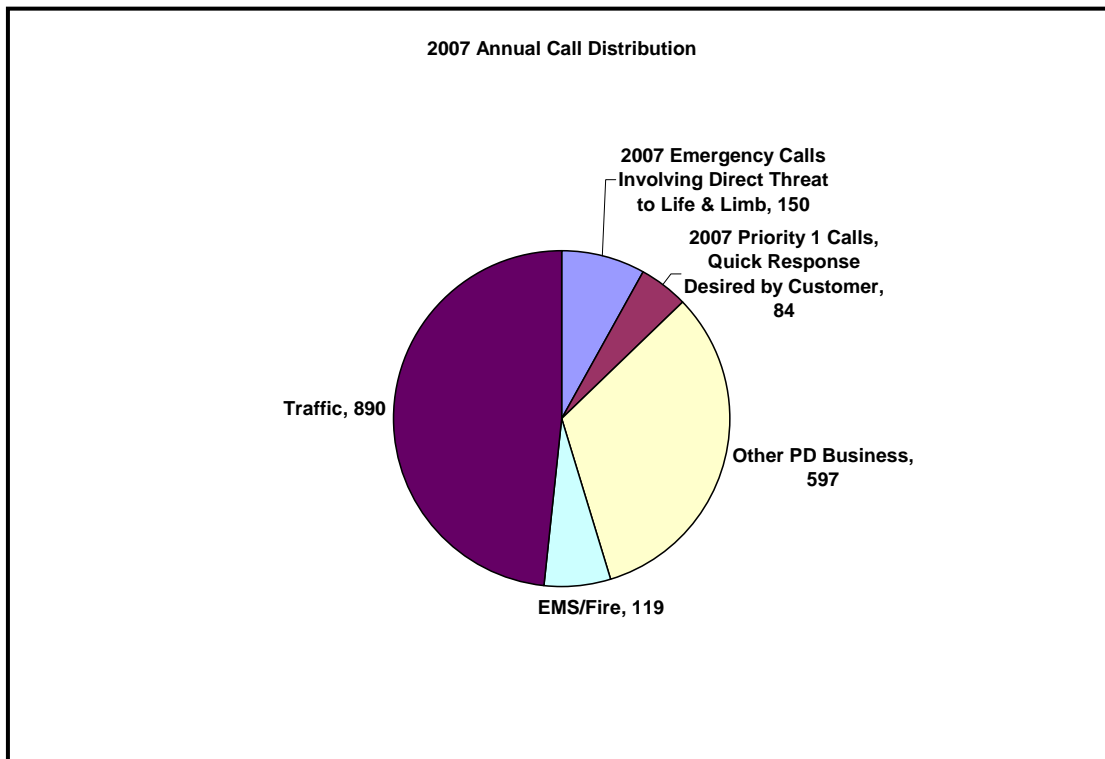
	<i>Police</i>	<i>Budget</i>	<i>of budget</i>	<i>population</i>	<i>homes</i>	<i>per home</i>
Honey Brook (State Police \$0)	\$0.00	N/A	0%	7,030	2,391	\$0.00
West Nantmeal (State Police \$0)	\$0.00	N/A	0%	2,222	801	\$0.00
East Nantmeal (State Police \$0)	\$0.00	N/A	0%	1,891	612	\$0.00
West Brandywine	\$1,089,540.00	\$3,009,655.00	36%	7683	2801	\$388.98
Upper Uwchlan	\$1,460,592.00	\$6,170,835.00	24%	9549	3039	\$480.62
East Brandywine	\$1,568,058.00	\$3,725,028.00	42%	6485	2275	\$689.26
Wallace	\$ 765,362.00	\$1,521,436.68	49%	3433	1065	\$718.65

Calls for Service

When someone calls 911 or an officer initiates a traffic stop or some other investigation, a call goes directly to Chester County dispatch. Dispatch then logs the call and assigns a code depending on the incident. The following charts detail the breakdown of calls for Wallace Township for the year 2007.

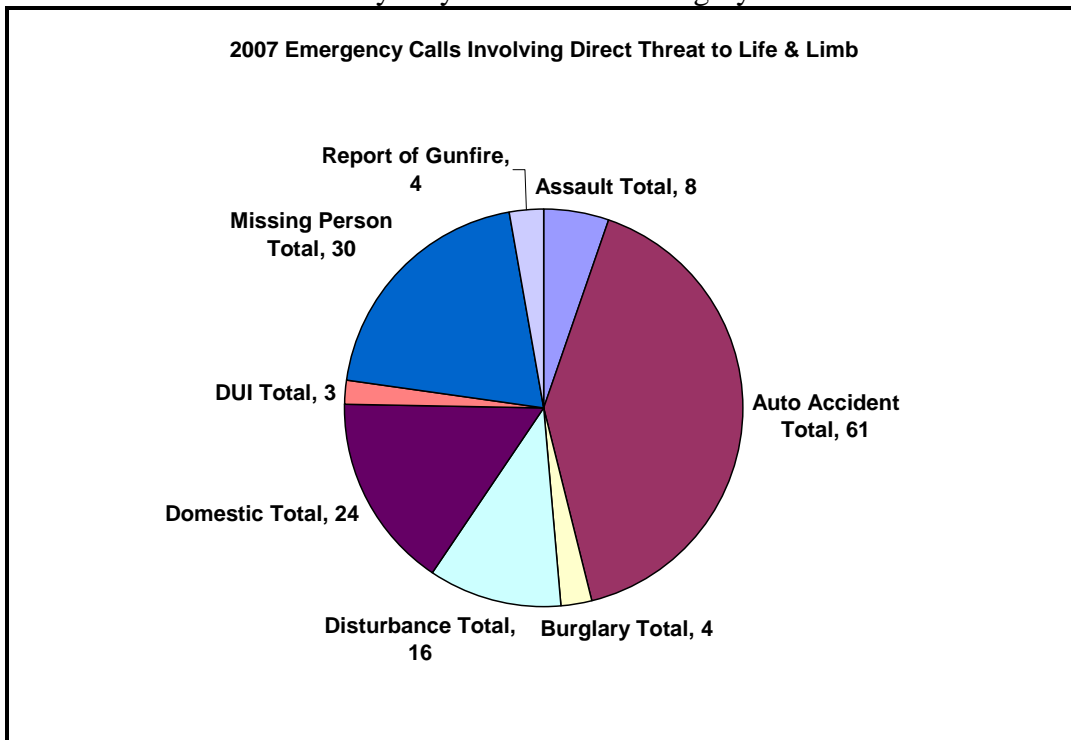
CALL DISTRIBUTION WALLACE TOWNSHIP 2007

The following chart is an annual breakdown of calls for service for Wallace Township in 2007.



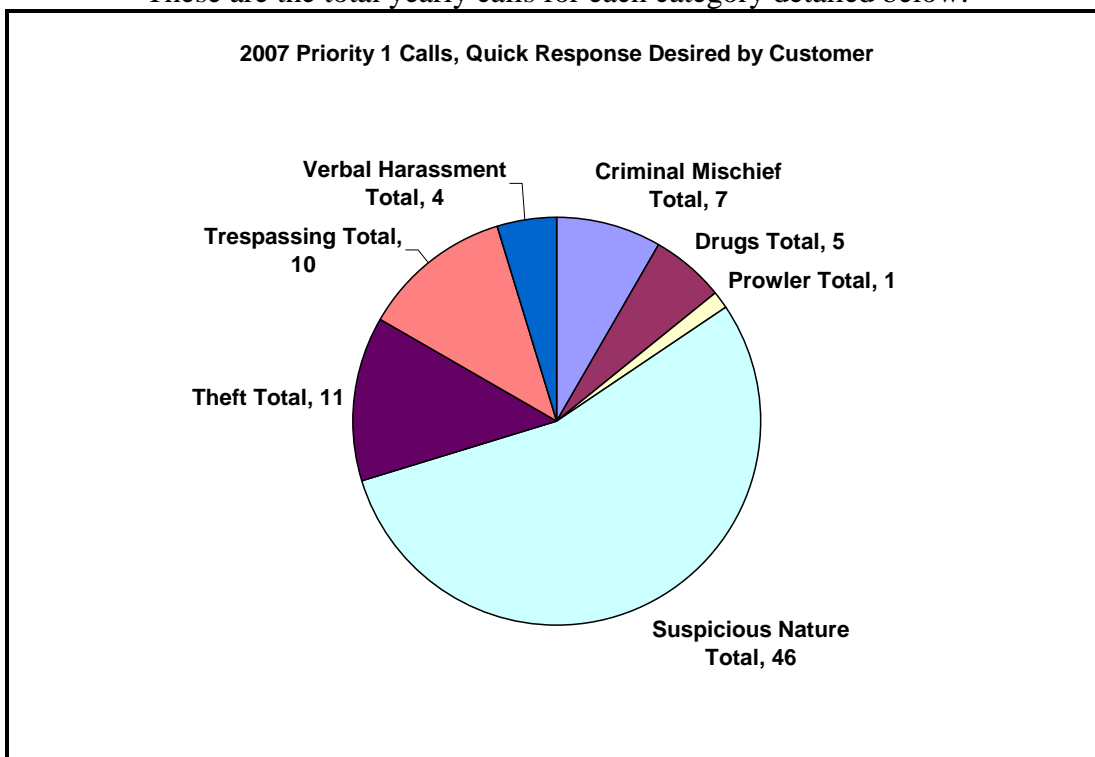
2007 EMERGENCY CALLS INVOLVING DIRECT THREAT TO LIFE & LIMB

These are the total yearly calls for each category detailed below.



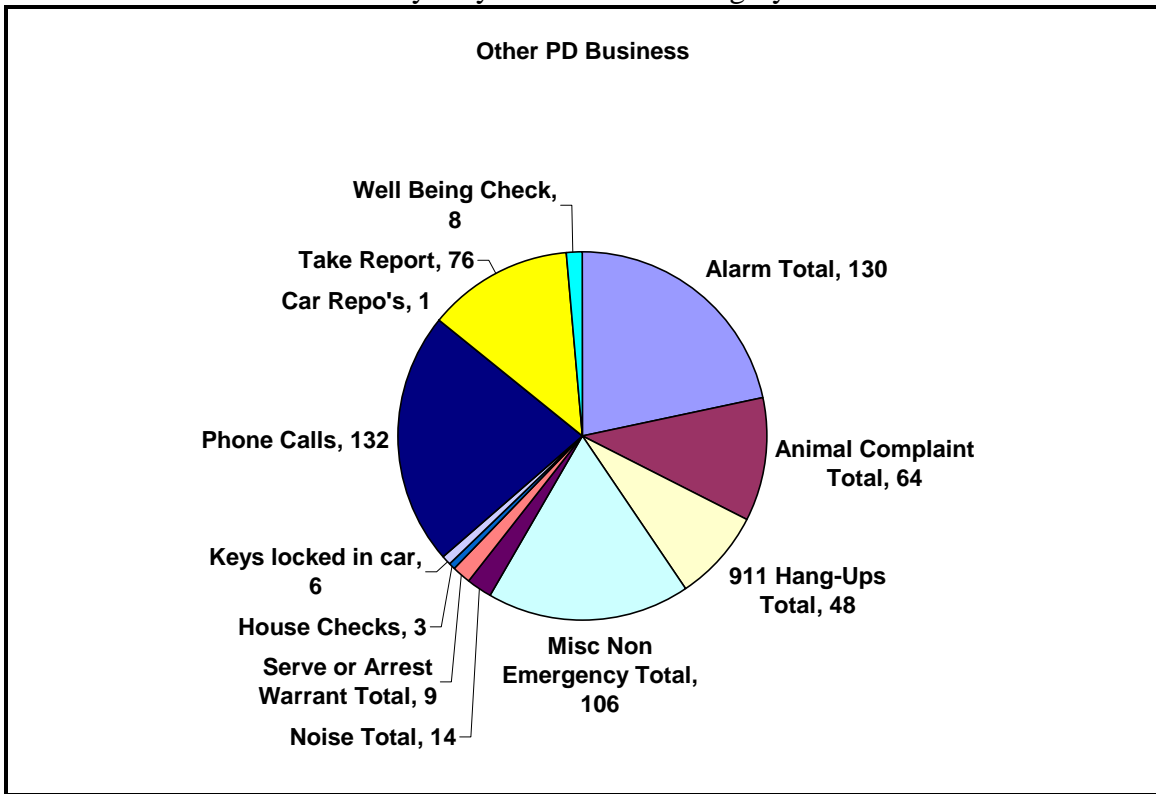
2007 PRIORITY 1 CALLS

These are the total yearly calls for each category detailed below.



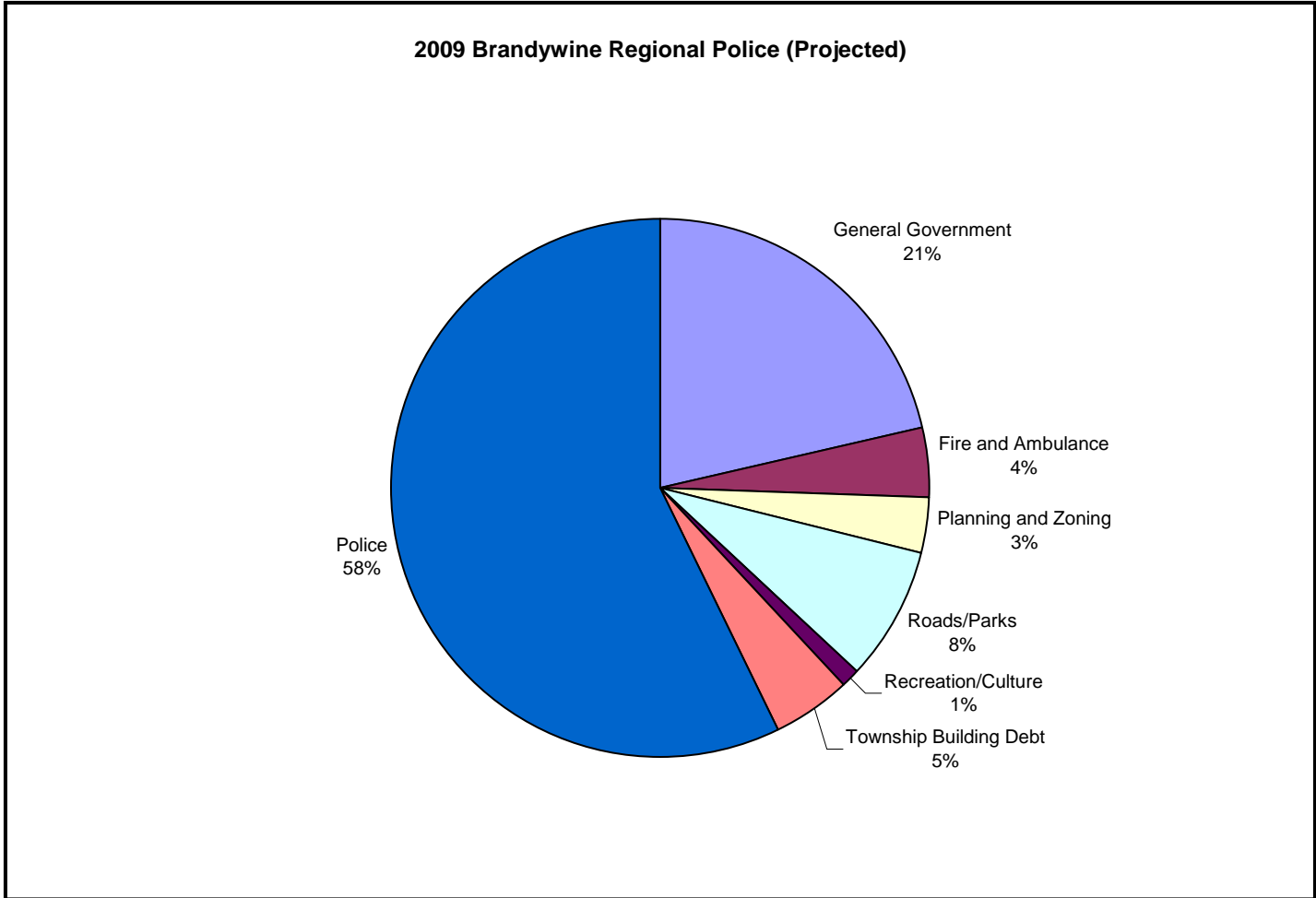
2007 OTHER PD BUSINESS (NON EMERGENCY CALLS)

These are the total yearly calls for each category detailed below.



**ANTICIPATED WALLACE TOWNSHIP BUDGET
REMAINING WITH BRPD**

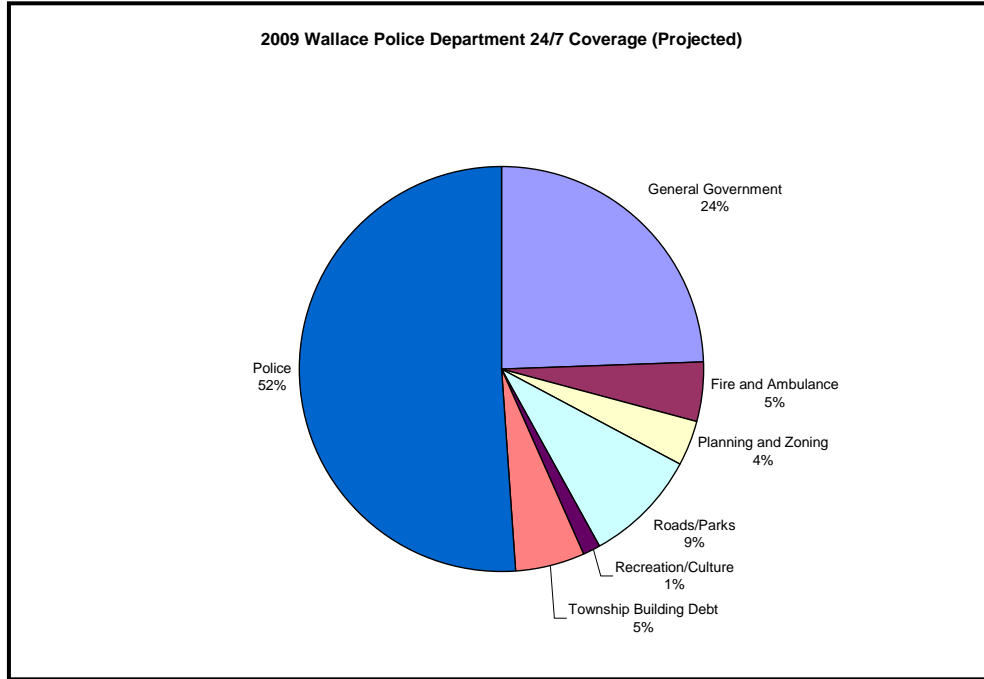
This chart represents the potential impact on Wallace Township’s 2009 budget if Wallace were to remain with the Brandywine Regional Police Department. This anticipated budget would require Wallace Township to commit 58% of its anticipated revenue toward police services and would require a property tax increase to meet the costs.



As part of their review, the Board of Supervisors’ have considered other options related to police coverage. Those options were to have our own 24/7 police department, another was a combination of local police and State Police coverage, and the final option was having State Police coverage. The three charts that follow will show the percentage of anticipated expense that each of these options would demand for the 2009 budget year.

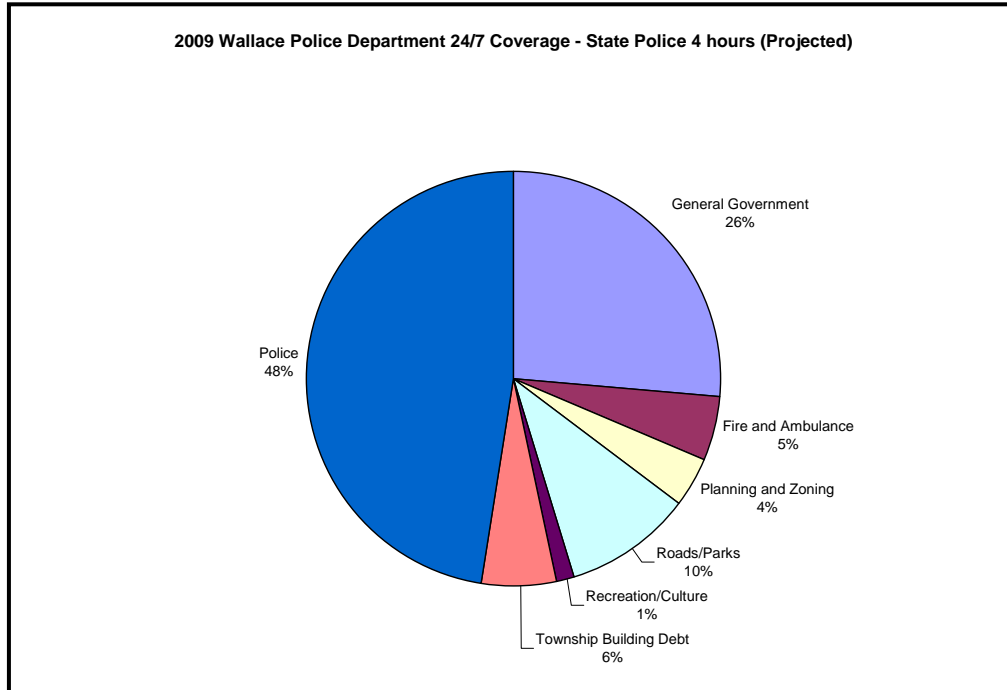
Wallace 24/7 Police Department

Having our own 24/7 police department would require 52% of our anticipated income for 2009.



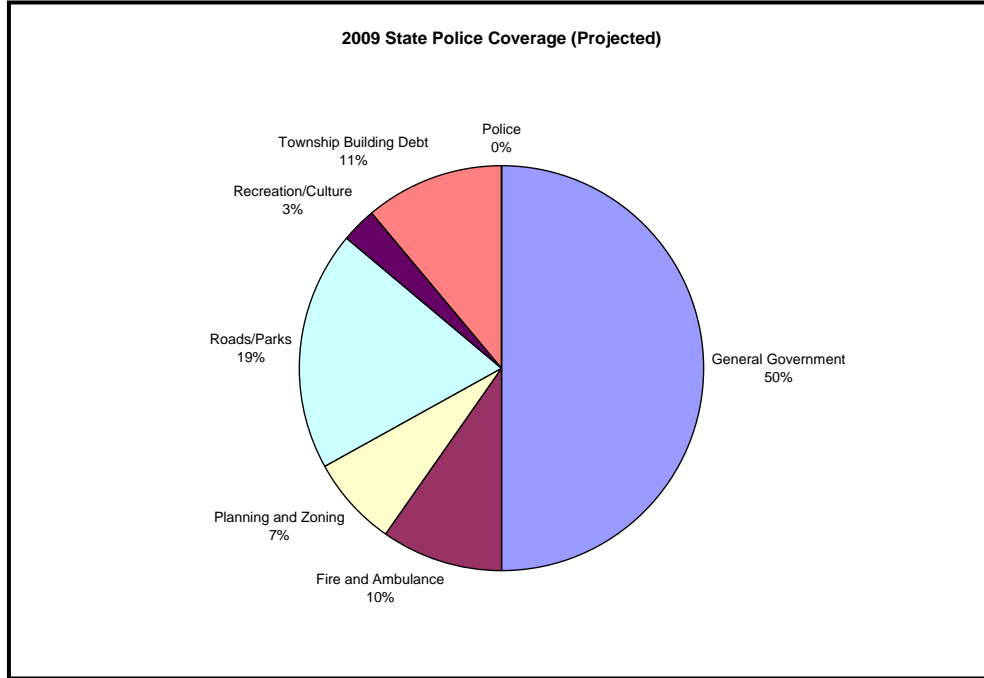
Wallace Township Police Department and State Police Combination

Having our own Police Department with State Police covering 4 hours daily would require 48% of our anticipated income for 2009.



State Police Coverage

State Police coverage would require no financial commitment from Wallace Township.



FINANCIAL IMPACT

The options being examined will impact each family as indicated in the graph below.

